

2026

**PAPÉ**

MACHINERY



# AFTERMARKET SOLUTIONS

# PAPÉ MACHINERY KEEPS YOU MOVING

## WITH 29 FAMILY-OWNED LOCATIONS THROUGHOUT THE WEST

- ▶ Expert 24/7 support for all makes and models
- ▶ Maintenance and repair services in the shop or field
- ▶ Knowledgeable and experienced factory-trained parts professionals and equipment technicians

### WASHINGTON

**Kelso**  
(360) 575-9959

**Kent**  
(206) 575-0140

**Montesano**  
(360) 249-4114

**Mt Vernon**  
(360) 424-3291

**Pasco**  
(509) 547-8813

**Spokane**  
(509) 838-5252

**Tacoma**  
(253) 922-8718

**Wenatchee**  
(509) 664-1265

**Yakima**  
(509) 248-7910

### OREGON

**Bend**  
(541) 389-5869

**Eugene**  
(541) 463-2900

**Klamath Falls**  
(541) 884-5683

**Medford**  
(541) 772-4706

**Portland**  
(503) 289-1103

**Tangent**  
(541) 812-0207

### NEVADA

**Sparks**  
(775) 353-0440

### HAWAII

**Eleele**  
(808) 246-0097

**Hilo**  
(808) 961-6673

**Kailua-Kona**  
(808) 329-5574

**Kapolei**  
(808) 682-8282

**Wailuku**  
(808) 242-4664

### IDAHO

**Ponderay**  
(208) 265-7282

### CALIFORNIA

**Fowler**  
(559) 834-4774

**Fremont**  
(510) 790-3600

**French Camp**  
(209) 983-8122

**Gilroy**  
(408) 848-4150

**Redding**  
(530) 241-4555

**Rohnert Park**  
(707) 584-9161

**Sacramento**  
(916) 922-7181





# 2026 SPECIALS

JANUARY	FEBRUARY	MARCH
Haul Bonus		
Winter Block Labor		
Construction Machine Inspection		
		Filters – 10% OFF
Shop Bonus		
Wirtgen Group Machine Inspection		
	Specialty GET	
	Steel Undercarriage	
		Strong Box Battery
	On-Site Cabinets	
APRIL	MAY	JUNE
Topcon Blitz & Calibration Special		
Ground Engaging Tools (GET)		
Construction Machine Inspection		
	Diesel Exhaust Fluid (DEF)	
	AC Inspections	
Specialty GET	Deere Reman	
Steel Undercarriage	CTL Undercarriage	
Strong Box Battery		Papé Portal Boost
Onsite Cabinets		
JULY	AUGUST	SEPTEMBER
Cool Guard II		Cutting Edges
	Fuel Protect	
Construction Machine Inspection		
Deere Reman	Specialty GET	
CTL Undercarriage	Strong Box Battery	
Grease & Accessories		
OCTOBER	NOVEMBER	DECEMBER
Cutting Edges		
	Filters – 10% OFF	Winter Block Labor
Construction Machine Inspection		
Specialty GET	Hydraulic Tune Up	
Fuel Conditioner		
Wirtgen Group Machine Inspection		

# PAPÉ PARTS ONLINE

## THE PAPÉ PORTAL'S BUILT-IN INSIGHT ENGINE ENABLES YOU TO QUICKLY AND EASILY MAKE DECISIONS TO MANAGE YOUR PARTS.

Papé boasts the largest inventory of heavy equipment parts in the West, with over 30 million OEM and aftermarket options. You're guaranteed to find exactly what you need in our extensive selection.



SCAN FOR MORE INFO

- ▶ Look up parts via John Deere Parts Advisor
- ▶ Order parts whenever and wherever with 24/7 access
- ▶ Send special instructions with the order
- ▶ Update your account information
- ▶ Review real-time parts pricing
- ▶ Browse on-hand inventory
- ▶ Select delivery methods
- ▶ Access parts invoices
- ▶ Saved parts lists
- ▶ Equipment lists
- ▶ Invoice lookup



Contact your local CSA or Parts Representative to get set up with a username and password.

Visit our Parts Portal:

<https://construction.papemachinery.com/parts>

## PARTS SUPPORT CENTER

### *Order parts when you need them using Papé Parts Support*

Papé offers the largest heavy equipment parts inventory in the West. You're sure to find what you need among our selection of 30+ million OEM and aftermarket parts. Plus, we have dozens of parts counter professionals averaging 20 years of experience to ensure you'll be able to get the parts you need, when you need them.

- ▶ Regional support team takes calls and processes all online parts orders through the *Papé Customer Portal*
- ▶ Customer access to nation-wide networks for *used parts distribution*
- ▶ **Used parts for all makes and models**

**Open 7am to 5pm Monday-Friday**

Parts Support Center – 503-978-3675

Used Parts Direct Line – 360-575-3280

[onlinepartsconstruction@papemachinery.com](mailto:onlinepartsconstruction@papemachinery.com)





# WORK NOW. *PAY LATER.*



Keep working and keep your cash. Put what you need on **PowerPlan™**.

PARTS / SERVICE / ATTACHMENTS / PREVENTATIVE MAINTENANCE / TECHNOLOGY

## ALL MAKES & MODELS

PowerPlan is a smart solution for managing cash flow and boosting profitability. Get instant No-Payments/No-Interest purchasing power for the things it takes to keep your business running smoothly.

# NO *PAYMENTS/INTEREST FOR 150 DAYS<sup>1</sup>*

OR

# 4.9% APR FOR 12 MONTHS<sup>1</sup>

24-MONTH OPTIONS AVAILABLE — SEE YOUR DEALER



Open your PowerPlan  
account today! Ask us how to  
apply or go to

[JohnDeereFinancial.com/PowerPlan](https://JohnDeereFinancial.com/PowerPlan).



**JOHN DEERE  
FINANCIAL**

\*Offer valid on qualifying purchases made between March 1, 2026 and February 28, 2027. Subject to approved credit on PowerPlan, a revolving credit service of John Deere Financial, f.s.b. For commercial use only. After the promotional period, interest charges will begin to accrue at Prime plus 14.9% APR. 4.9% APR is for 12 months only. 0% APR for 150 days and 4.9% APR for 12 months offers require a minimum \$1,000 purchase with at least \$500 of the purchase being parts. Repairs must be made to John Deere equipment using John Deere OEM parts. Prior purchases are not eligible. Available at participating dealers. Prices may vary by location.

# TOP-QUALITY GREASE SOLUTIONS

## Multi-Purpose

- ▶ **SD Polyurea:** Use for U-joints, wheel bearings, and other grease points requiring severe-duty grease
- ▶ **HD Lithium Complex:** Use for wheel bearings, U-joints, and other grease points requiring HD grease
- ▶ **Lithium:** Ideal all-season grease for light to medium duty applications
- ▶ **Extreme-Duty Synthetic:** High-temperature, extreme pressure grease (non-toxic, non-straining, odorless, food grade)

## Special-Purpose

- ▶ **HD Moly Grease:** Excavator pins, fifth wheels, ball joints, chassis, chains, cable, and conveyors – Deere factory fill in most C&F machines
- ▶ **Lithium Complex 3% Moly:** For use in applications with continuous sliding contact and shock loads
- ▶ **Calcium Sulfonate 5% Moly:** Increased protection for applications with continuous sliding contact and shock loads



# JOHN DEERE FILTERS

## Oil Filters

**Dirt in oil will slow you down, leading to decreased productivity and shorter service intervals. That's why John Deere oil filters are tested to make sure they capture more dirt than lesser-quality filters.**

- Even pleats and filtration media spacing ensures even filtration for a better overall protection without gaps
- Spiral and crimped center tube adds strength to prevent filtration media from collapsing and letting particles into your system
- Rubber gaskets encourage a tighter seal than plastic gaskets found in competitive filters

## Air Filters

**John Deere air filters are another high-quality line of defense against contaminants invading your engine. They reduce engine wear by removing dust, dirt, and other pollutants from intake air.**

- Even pleats and more media ensure high efficiency and a longer service interval
- Proper airflow ensures a minimum flow restriction while capturing more contaminants than leading competitive air filters
- A tight seal keeps contaminants from bypassing the filter

## Fuel Filters

**John Deere fuel filters have coated media that keep water out, preventing rust and microbial growth that could damage your fuel and lead to poor fuel economy.**

- Advanced, coated media – repels water and contaminants
- High-grade seals and components that provide durability and corrosion protection
- Proprietary flow-technology for optimum particle and water removal



# JOHN DEERE PARTS ONSITE

## CABINETS STOCKED WITH ALL MAKES PARTS!

Stock the parts that you use most often and have them regularly refilled by Papé Machinery on a monthly basis.

### Papé Machinery will provide the following:

- ▶ Check filters and parts stock - replace as needed
- ▶ Any John Deere incentives and discounts will be applied if order exceeds current discount offered
- ▶ Use current John Deere Financial Programs to buy now and pay later
- ▶ Papé Machinery Customer Portal online ordering
- ▶ Based on your stocking needs, Papé Machinery can provide up to 3 Parts Onsite cabinets
- ▶ Customer will receive an initial 10% discount at time of purchase, and a 5% discount every time it is restocked

*(\*Papé Machinery reserves the right to discontinue this promotion)*



## HYDRAULIC HOSES

### Increase Uptime

Crimping your hoses gets you back up and running quickly

### John Deere Fab Guide

Exclusive access to recipes delivers the fastest options

### Equipment Program

Options to meet your production needs, large or small

### Efficiency Through Partnership

Local support for production selection, applications, and equipment

### Use Ultra Clean hose cleaning and sealing on all your hose assemblies

- ▶ Quick and easy
- ▶ Cost-effective
- ▶ Inhibits downtime
- ▶ Reduces contaminates

**Parker**



**GlobalCore with Tough Cover**  
available for all makes and models



# FUEL SYSTEMS



## DIESEL FUEL CONDITIONER

(ALL SEASONS) TY27928

Fuel conditioner can and should be used year round. In cooler months, when the ambient temperature begins to drop, diesel fuel can begin to gel when the ambient temperature is 10 degrees above freezing (42 degrees Fahrenheit).

**All Seasons Diesel Fuel Conditioner can be used year round with the added benefit of:**

- Deicer – prevents fuel lines from freezing
- Add 4 oz. per 44 gallons of fuel
- 1 qt (32 oz.) will treat 356 gallons of fuel

## JOHN DEERE KEEP CLEAN

TY27837

- If you are experiencing fuel-related symptoms such as hard starts, loss of power, excessive smoke, or rough idling, try adding Keep Clean to the tank
- Detergent to improve engine performance conditions caused by poor fuel quality
- Remove existing injector deposits and helps prevent the formation of new injector deposits
- Maintenance treatment: 4 oz. per 40 gallons of diesel fuel
- Cleaning treatment: 4 oz. per 20 gallons of diesel fuel

## FQS MICROBICIDE

PM701014US

- Helps prevent fuel system failures
- Fully compatible with fuels and additives blended in the fuel system
- Typical treat rate is 1 oz. per 78 gallons
- "Shock" treat rate is 2 oz. per 78 gallons
- Fuel filters should be replaced regularly while treating, then again after completion of treatment

## EMERGENCY THAW

TY27730

- Liquifies gelled fuels
- Melts ice from plugged fuel filters
- 32 oz. bottle treats 400 gallons
- Effective in all diesel blends
- Recommended once diesel fuel has thawed, regularly treat with John Deere Fuel Conditioner (All Seasons) to prevent future gelling



TY27786

TY26827

TY27730

PM701014US

# MACHINE FLUIDS

For use in heavy-duty off road applications, on-road trucks, marine engines, natural gas engines, pick ups and automobiles.

## PLUS-50™ II ENGINE OIL

- ▶ Excellent protection for longer engine life for current and older engines
- ▶ Up to 500-hour oil-drain intervals when used in John Deere engines with John Deere long-life oil filters
- ▶ Unsurpassed deposit control and high-temperature stability performance
- ▶ Provides rust protection for your engine's internal parts for wet environments and off-season storage

PART NUMBER 14W-40	SIZE
TY26673	1 Gal
TY26675	2.5 Gal
TY26991	275 Gal

## HYDRAU™ XR

- ▶ Premium ISO VG 46 all-season synthetic hydraulic oil
- ▶ Optional factory fill for cold climates
- ▶ Synthetic blend base stock
- ▶ Superior oxidation and thermal stability
- ▶ Exceptional anti-wear performance
- ▶ Protects against rust and corrosion
- ▶ Replaces optional fluids: Plus 50-II W-40, Talamar 32 and Hydrau 46 Plus
- ▶ Exceptional cold temperature flow characteristics -40°C to +40°C (-40°F to +104°F)

PART NUMBER	SIZE
TY27318	5 Gal
TY27319	55 Gal

## HY-GARD FLEX

- ▶ Designed to simplify fluid management
- ▶ Maximize uptime, intervals of up to 6,000 hours
- ▶ Compatible with Hy-Gard & Hydrau Oils

PART NUMBER	SIZE
TY27987	1 Gal
TY27988	2.5 Gal
TY27989	5 Gal
TY27991	55 Gal
TY27992	275 Gal

## HYDRAULIC OIL 46

- ▶ Zinc-free technology reduces sludge & contamination
- ▶ Offers superior extreme temperature performance
- ▶ Drain intervals up to 5,000 hours

PART NUMBER	SIZE
TY26399	5 Gal
TY26400	55 Gal
TY27708	330 Gal

## HYDRAU™

- ▶ Premium ISO VG 68 hydraulic fluid
- ▶ Mineral oil base stock
- ▶ Ambient temperature range: -25°C to +50°C (-13°F to +122°F)
- ▶ Approved for 4,000-hour service interval in certain machines

PART NUMBER	SIZE
TY27366	2.5 Gal
TY27367	5 Gal
TY27368	55 Gal
TY27369	275 Gal



HYDRAU™ XR



PLUS-50™ II ENGINE OIL



HYDRAU™



HYDRAULIC OIL 46

DO NOT MIX FLUIDS | DO NOT MIX FLUIDS | DO NOT MIX FLUIDS

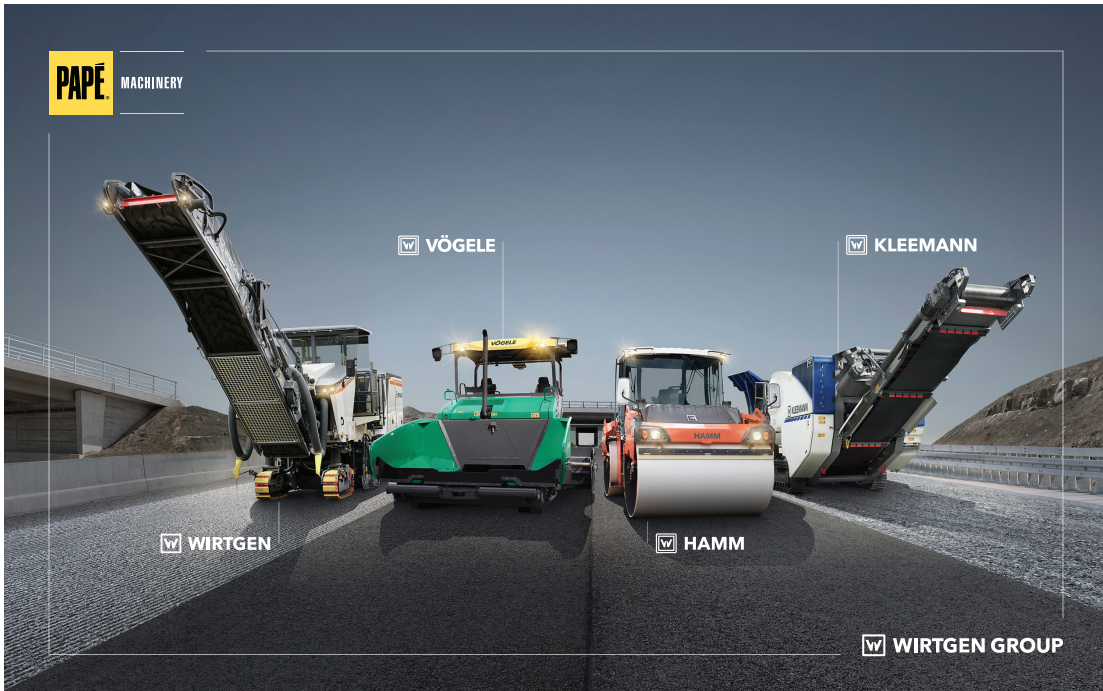
# WIRTGEN GROUP

## WIRTGEN EQUIPMENT INSPECTIONS, FREE DECEMBER 1, 2025 THOUGH APRIL 30, 2026

- ▶ Wear part assessment
- ▶ Function test
- ▶ Maintenance review
- ▶ Parts recommended
- ▶ Papé Machinery will provide **FREE** hats for your crew upon completion of machine inspection
- ▶ Parts discount may apply when purchased

### ELIGIBLE MACHINES INCLUDE:

- ▶ *Vögele pavers and screeds*
- ▶ *Kleemann crushers and screens*
- ▶ *Hamm asphalt rollers and soil compactors*
- ▶ *Wirtgen milling machines, soil stabilizers, and slipform pavers*



## MEET THE WIRTGEN GROUP

### **WIRTGEN**

The Wirtgen product line-up includes cold milling machines, recyclers and soil stabilizers, binding agent spreaders, slipform pavers, and surface miners for open-cast mining operations.

### **VÖGELE**

World-renowned for top quality asphalt paving equipment, Vögele's line of pavers, screeds, and powerfeeders are the ultimate choice for road paving applications of any size.

### **HAMM**

The Hamm line is focused on compaction technology with over 200 models of compactors, tandem rollers, and pneumatic tire rollers to meet the needs of any road or soil compaction project.

### **KLEEMANN**

Kleemann mobile systems are built to recycle and process natural stone efficiently and profitably where needed, replacing stationary plants and outdated processes.



## Competitive demonstrations available!

**Ideally tuned components for greater machine productivity. The goal of every construction measure is to achieve high-quality results.**

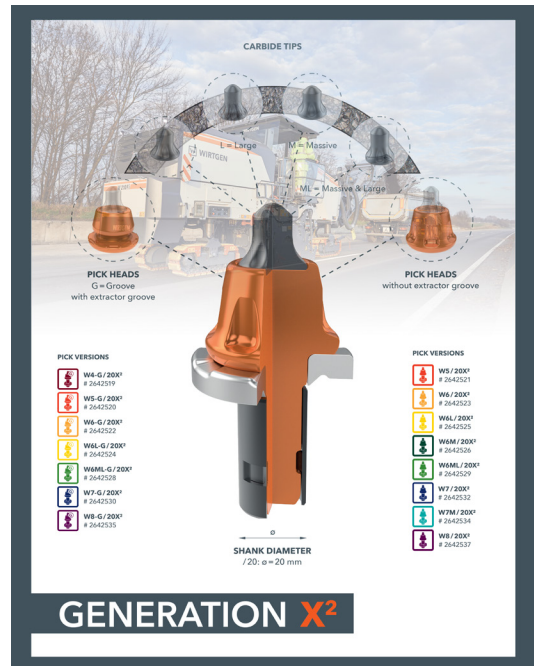
This applies to road reconstruction in the use of cold milling and cold recyclers as well as in soil stabilization and in mining useful minerals with surface miners.

Optimal interplay between the drum, pick holder, and pick is essential for precise, efficient pavement processing.

**WIRTGEN** is the market leader in cutting technology, and it offers customers ideally tuned, high-performance cutting systems. In addition, WIRTGEN is constantly developing its cutting technology further. It is informed, in particular, by experience in practice and feedback from our customers.

### Benefits

- ▶ Maximum productivity
- ▶ Precise results
- ▶ Maximum life
- ▶ Lower operating costs
- ▶ Focus on advanced development
- ▶ Inquire with your CSA or parts professional regarding container pricing



**ASK YOUR CSA ABOUT OUR RHINO BIT TEST & DEMO PROGRAM**

## BETTER. STRONGER.

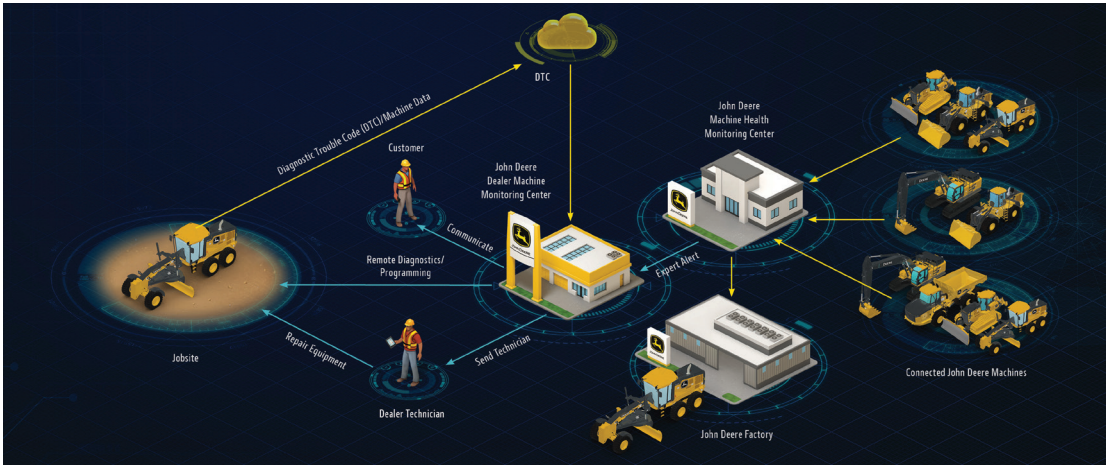
**+25% savings with GENERATION X<sup>2</sup> round-shank picks**

A 25% bonus on your construction site sounds too good to be true. With optimized geometry and a reinforced wear plate, GENERATION X<sup>2</sup> picks protect tool holders, improve pick rotation, and extend service life by more than 25%.

*For you, this means: lower operating costs - and that with consistently high premium quality.*

			Asphalt					Concrete	
			W4	W5	W6	W7	W8	W1	
			W4-G/20X <sup>2</sup> # 2642519	W5-G/20X <sup>2</sup> # 2642520	W6-G/20X <sup>2</sup> # 2642522	W7-G/20X <sup>2</sup> # 2642530	W8-G/20X <sup>2</sup> # 2642535	W1-10-G/20X <sup>2</sup> # 2642516	W1-13-G/20X <sup>2</sup> # 2642517
				W5/20X <sup>2</sup> # 2642521	W6/20X <sup>2</sup> # 2642523	W7/20X <sup>2</sup> # 2642532	W8/20X <sup>2</sup> # 2642537		
W 35 DC, W 35 Ri			✓					✓	
W 50, W 50 H, W 55 H, W 50 DC, W 50 R, W 60 R			✓	✓				✓	
W 60, W 100 (L), W 100 (H), W 100 R, W 130 H			✓	✓	✓			✓	
W 100 F, W 120 F, W 130 F, W 100 CF, W 120 CF, W 130 CF, W 150, W 150 CF				✓	✓	✓		✓	
W 1500, W 1900, W 195, W 2000, W 200, W 200 F, W 207 Fi, W 205, W 200 H, W 215, W 210, W 210 Fi, W 210 XP, W 2100, W 220, W 2200, W 250, W 240 CR, W 380 CR					✓	✓	✓	✓	✓

# THE POWER OF THE CONNECTED MACHINE



## OPERATIONS CENTER:

- ▶ Monitor equipment and job sites in real-time
- ▶ Track machine health, fuel levels, and job site
- ▶ Progress with JDLink
- ▶ Custom alerts and job site management
- ▶ Set alerts for location, idle times, speed and maintenance
- ▶ Remote display access
- ▶ Get expert support from your dealership advisors who can troubleshoot and adjust settings remotely, reducing downtime

## MACHINE MONITORING:

- ▶ Comprehensive data and monitoring process reporting
- ▶ Multi-faceted system integration with manufacturers

## REMOTE DIAGNOSTICS & PROGRAMMING:

- ▶ Real-time machine location & Diagnostic Trouble Code
- ▶ Ability to record and export data
- ▶ Latest version software available for remote installation without a technician required
- ▶ Up to the moment machine performance data recording

## MACHINE MONITORING CENTER:

- ▶ Centralized Monitoring
- ▶ Expert Alert triage and assignment
- ▶ Warranty status

# MACHINE MONITORING CENTER



**Ask your CSA how machine monitoring can increase your uptime and decrease your cost**

Papé Machinery's Alert Management Center monitors and interprets JDLink machine-health alerts, oftentimes before the operator is even aware that a problem exists. This data, coupled with the Remote Diagnostic capabilities integrated in your connected machine, can provide us with critical information to determine what steps can be taken to minimize or even eliminate downtime. So even if you don't have JDLink set to send you alerts, we will know when something needs attention.



**SCAN QR CODE**

**To learn more about Papé Machinery's  
complete technology offerings!**

## Why John Deere Protect?

Expertly performed maintenance, done on time with genuine John Deere parts, ensures that the machine is being maintained by the book. Regular machine inspections, fluid sampling, and machine monitoring help identify little problems so they can be corrected before they become big problems, which maximizes uptime and minimizes the risk of unplanned downtime or interruption. Your participating dealer knows you and your business, and can work with you to identify any additional tailored services that work best for you.

## JOHN DEERE PROTECT SERVICE PLAN:

### What Is John Deere Protect?

John Deere Protect is a tailored program designed to help manage the Total Cost of Ownership of a John Deere Construction machine. It combines the following elements into a single package to reduce the risk of unexpected downtime and repair costs.

### What Is included?

- ▶ Machine setup pre-delivery inspections
- ▶ Base warranties and included assurances
- ▶ Extended warranties
- ▶ Inspections deliver more uptime
- ▶ Lower downtime risk
- ▶ Increased machine production
- ▶ Inspect More, Pay Less
  - Potential Parts Discounts

### Periodic Maintenance (PM) Service Plan Including:

- ▶ Scheduled PM service work and machine inspections performed at 500 hour intervals by dealer technicians
- ▶ Genuine John Deere PM parts and fluids
- ▶ Fluid sampling and analysis
- ▶ Connected Support remote machine monitoring and diagnostics

### John Deere Protect Inspection Program:

- ▶ Completed by factory-trained technicians
- ▶ Keep machines up and running
- ▶ Extend lifespan of equipment
- ▶ Avoid small problems turning into costly issues

## John Deere Equipment Mobile App

### Maintenance and Parts Support

- ▶ Track maintenance schedules and order parts directly from your mobile device

### Integration with John Deere Operations Center

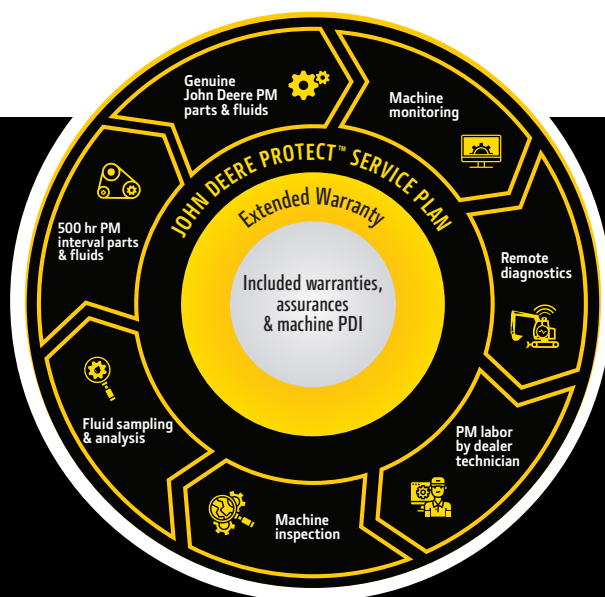
- ▶ Monitor machine health, fuel levels, and operating hours in real-time

### User-Friendly tools and Resources

- ▶ Searchable operators manuals, work optimization guides, and more



SCAN FOR MORE INFO  
ON JDPROTECT



John Deere Protect™ Service Plans are available for eligible models of construction equipment at participating John Deere dealers in the United States. Number of Scheduled Maintenance Events and parts required varies based on specific model, in accordance with the operator's manual. Please see your participating dealer for complete details.



# GRADE CONTROL SOLUTIONS



## MACHINE CONTROL FOR COMPACT TRACK LOADERS AND COMPACT EXCAVATORS

With MC-Mobile solutions for your mini excavator, you can measure, design, and build on your own. Stay in the cab and respond to any onsite design challenges to do it right, the first time.

Our Compact Track Loader solutions assist operators in gaining greater accuracy with less time and effort, providing a major production benefit and drastically reducing time of your smaller grading projects.

## MAINTAIN EQUIPMENT, MAXIMIZE PRODUCTIVITY.

### Uptime is crucial to your operation.

Trust PAPE Service Center to keep your TOPCON technology online.

Whether it's support when you need it most, or service for your equipment without leaving your shop, when you partner with PAPÉ, you're partnering with a team dedicated to your success.

### As an authorized Topcon Dealer, we offer a full-service parts department.

- ▶ Lasers
- ▶ Cables
- ▶ Tripods
- ▶ Sensors

### Full-service Repair and Support Center

- ▶ In-house factory-trained Topcon technicians
- ▶ Onsite and remote support available
- ▶ Calibration for lasers

### Papé Grade Control Support Call Center

- ▶ 833-PAPE-GPS
- ▶ No charge phone support for Papé customers

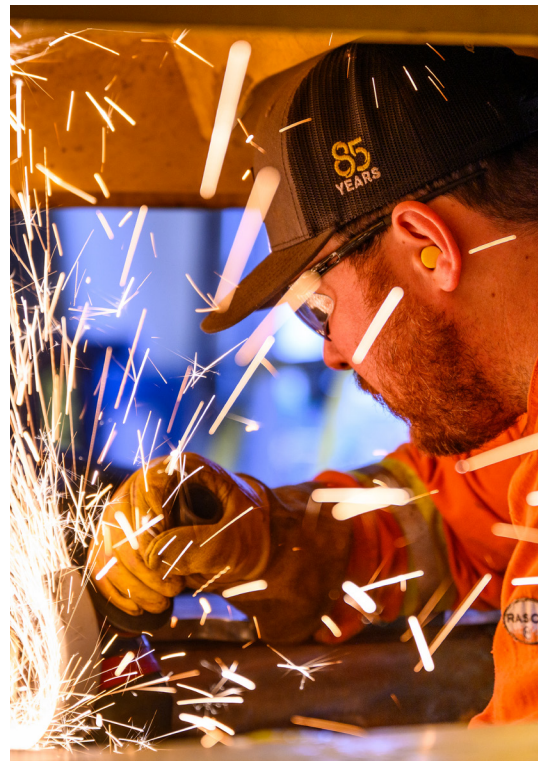


# FABRICATION

## COMPREHENSIVE MACHINE SERVICES

Our fabrication and machine services are built around one goal keeping your fleet productive. With full service machine shops, advanced cutting capabilities, and certified welding expertise, Papé Machinery Construction and Forestry provides dependable solutions for everything from component repair to custom fabrication.

- ▶ Full machine shops with mills and lathes
- ▶ In-house and mobile align boring up to 10 inches
- ▶ Bore welding up to 30 inches
- ▶ CAD plasma cutting up to 1.25-inch steel
- ▶ CAD flame cutting up to 6-inch steel
- ▶ Logic board generated CAD drawings
- ▶ Welding of all types of steel
- ▶ Hard-facing
- ▶ Cylinder manufacturing

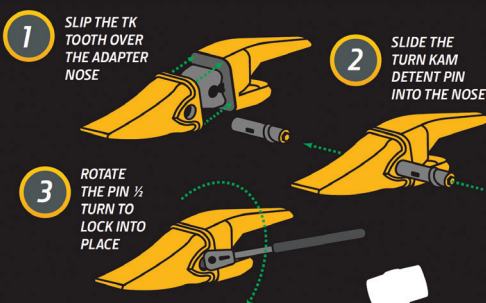


## WEAR ITEMS SOLUTIONS

### Ground Engaging Tools Cutting Edges—Protect Your Investment!

Ensure ultimate uptime for your machine by properly managing its cutting-edge system to help improve productivity, reduce machine downtime, and ultimately lead to higher returns on your investment. We have a full line of cutting-edge products that can be your solution regardless of application.

#### ASK ABOUT OUR FREE ADAPTOR PROGRAM



**FULLY HAMMERLESS**  
NO HAMMERS OR PRY BARS



#### What We Offer:

- ▶ Grader Edges
- ▶ Lip & Heel Shrouds
- ▶ Vertical Shrouds
- ▶ Jagz
- ▶ Standard Cutting Edge
- ▶ Stinger & Scarifier

#### TK-Series Tooth System – Why It's Better.

The TK-Series System is engineered to deliver maximum performance, quick and safe replacement, and superior tooth retention.

#### Worksite Safety:

- ▶ No hammers or pry bars—a simple socket wrench is all you need for quick and safe tooth removal.
- ▶ Put the hammer down! Installing and removing TK-Series bucket teeth is a simple, three-step process.



# REBUILT

## ReLife Program – Extend Equipment Life

- ▶ **Certified Rebuild Centers:**  
Dealer-designated John Deere CRC facilities for complete machine or powertrain rebuilds
- ▶ **Comprehensive Inspection:**  
Steam cleaning, oil/fluid sampling, hydraulic and structural evaluations, wiring checks, and software updates
- ▶ **Customized Repair Plans:**  
Start with re-manufactured powertrain components and build a tailored plan for your machine



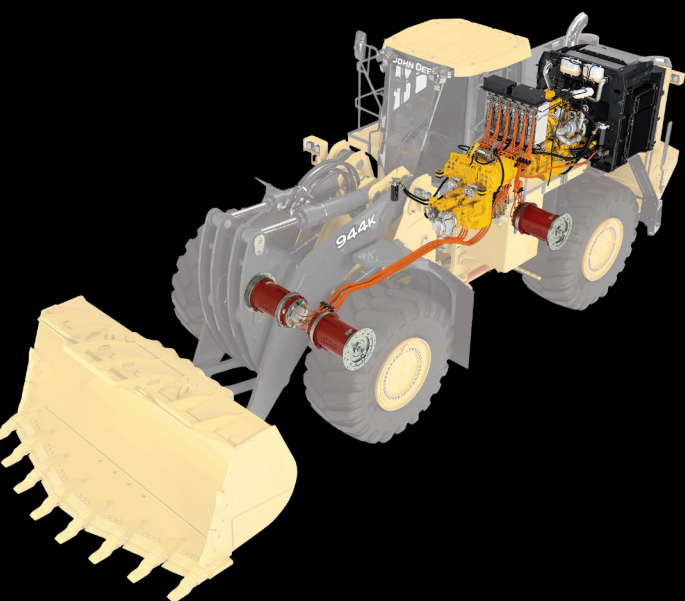
## Warranty Options:

Standard **1-year warranty** on all John Deere Reman components installed by Papé certified technicians.

Extended coverage:  
**2 years / 3,000 hours** or **3 years / 5,000 hours** available.

## Benefits:

- ▶ **Extend machine lifespan**
- ▶ **Reduce downtime and operating costs**
- ▶ **Maintain flexibility for repairs**





# **+ RUNNING**

## **John Deere Reman Reload Program**

Refresh aging powertrain systems to keep operating costs low.

### **INCLUDES:**

- ▶ Reman Components when installed by Papé Machinery
- ▶ 12-month parts and labor warranty (extended options available)
- ▶ Latest software updates for electronic controllers
- ▶ Hydraulic components require oil sampling for warranty validation

### **ADVANTAGES:**

- ▶ Rapid repair uptime with readily available parts
- ▶ Field-friendly component replacement
- ▶ Updates to current production standards

### **WHY REMAN?**

- ▶ **Faster turnaround**
- ▶ **100% genuine Deere parts**
- ▶ **Tested to OEM specifications**



### **JOHN DEERE REMAN:**

- ▶ 100% Deere parts, tested to OEM specifications
- ▶ 12 month warranty when Papé installs
- ▶ Custom-tailored extended warranty packages at your request
- ▶ Minimize Downtime, Increase Uptime
- ▶ Typically 30% less than new components

**Talk to your tax consultant about available machine reschedule or depreciation benefits.**

# FORESTRY SOLUTIONS



JOHN DEERE



**young**  
CORPORATION

 **waratah**



## TIMBERMATIC™: ELIMINATE GUESSWORK

Our TimberMatic Maps™ and TimberManager™ software platform will revolutionize how you plan, implement, and monitor your logging operations. This map-based production-planning and tracking system allows contractors and operators alike to share real-time production and location information – taking the guesswork out of effective decision-making.

**TimberMatic™ gives you in-machine access to:**

- ▶ Remote Monitoring
- ▶ Live Production View
- ▶ Real-Time Updates
- ▶ Precise Progress Tracking
- ▶ Simplified Mapping
- ▶ Demonstration Available Upon Request





# CONSTRUCTION SOLUTIONS



JOHN DEERE



TOPCON



LEEBOY  
FAYAT GROUP



WIRTGEN



HAMM



VÖGELE



KLEEMANN

GRADALL

VACALL™

*Prioth*



FUCHS  
A TEREX BRAND



Klein



BREAKER  
TECHNOLOGY,  
INC.  
an Atlas company

engcon®



TRAIL KING

## THE PAPÉ GROUP OF COMPANIES



### Keeps You Moving®

We're Papé, here to keep you moving, whether you're on the farm, building infrastructure, supporting job sites, managing facilities, or keeping operations running behind the scenes. From equipment sales and rentals to parts, service, and long term support, our companies work together to deliver reliable solutions across agriculture, construction, transportation, material handling, and engineered products.

It's a promise we have kept for four generations and one we intend to carry forward by investing in people, technology, and long standing partnerships. With locations throughout the West and a team committed to doing business the right way, Papé is built on trust, service, and relationships that last.

**Scan the code** to learn more about our companies and how we support the work you do every day.



MATERIAL  
HANDLING



KENWORTH



MACHINERY



Ditch Witch  
West



ENGINEERED  
PRODUCTS  
A PAPÉ COMPANY



# JOIN THE PAPÉ TEAM TODAY!

## Why Work For Papé?

At Papé Machinery Construction & Forestry, we're always searching for driven, dedicated, intelligent individuals to join our team. As a family business built on generations of hard work, we know how important it is to hire employees committed to excellent service. At every level of our company, from our administrative staff to our repair technicians, you'll find people who love their work and love going above and beyond for our customers. If that excites you, fill out an application today. We can't wait to meet you!

The Papé Group is an Equal Employment Opportunity (EEO) employer and welcomes all qualified applicants. Applicants will receive fair and impartial consideration without regard to race, sex, color, national origin, age, disability, veteran status, genetic data, religion or other legally protected status.

## Benefits We Offer

- ▶ Retirement Plan & 401(k) Matching Program
- ▶ Health Insurance
- ▶ Dental Insurance
- ▶ Vision Insurance
- ▶ Prescription Insurance
- ▶ Flexible Spending Accounts (Flex Plans)
- ▶ Life Insurance
- ▶ Short- and Long-Term Disability Insurance
- ▶ Progressive Paid Holiday & Vacation Plans
- ▶ Online and Instructor-Led Training
- ▶ Professional Work Environment
- ▶ New and Rewarding Opportunities in our Growing Company



## Our Technician Training Program

Papé Machinery Construction & Forestry is always on the lookout for Technicians who want to be part of a great team and have a commitment to long-term growth. Therefore, we have partnered with several Diesel and Automotive Technician programs to provide our Papé Technician Sponsorship program. If you are planning to attend a diesel technology or automotive technician program, we want to hear from you! Between the education you receive and the in-depth, hands-on, factory training we provide, you can be sure that you will be fully prepared for your career as a technician. Not to mention, our Technician Sponsorship program provides benefits like tuition reimbursement, incentives, tooling, safety gear, and more!

## WANT TO LEARN MORE?



### SCAN THE QR CODE

To learn more about our sponsorship program or visit [construction.papemachinery.com/careers](https://construction.papemachinery.com/careers) to see all our career information and opportunities.

Connect with us for updates, tips, pictures, industry headlines, and more! Like us on Facebook, follow us on Instagram, subscribe on YouTube and build your network on LinkedIn.



VISIT US AT: [CONSTRUCTION.PAPEMACHINERY.COM](https://construction.papemachinery.com)